



SURVEYOR'S OFFICE
Hamilton County

Kenton C. Ward, Surveyor

Phone (317) 776-8495

Fax (317) 776-9628

Suite 188

*One Hamilton County Square
Noblesville, Indiana 46060-2230*

November 3, 2006

To: Hamilton County Drainage Board

Re: Krause and Klepfer Drain – Sunny Meadows, Sec. 1 Arm Reconstruction

Attached is a 52.5 petition and plans for the proposed relocation of the Krause and Klepfer Drain. The relocation is being proposed by Estridge Development Company, Inc. The proposal is to reconstruct the drain across parcel 13-11-20-00-00-012.001 as part of the Sunny Meadows, Sec. 1 project per plans by Schneider Corp., Job No. 4788.002, revision date 11/2/2006, pages C101 – C102. Per the plans, storm water will be routed through the Sunny Meadows subdivision from 141st on the north side of the subdivision draining in a southwesterly direction and tie into an existing storm structure on the west side of Howe Road. This will occur between structures 118, 117, 116, 115, 114, 113, 112, 111 and 110; between Strs. 110 and 234; between Strs. 234, 233, 232, 231, 230, 229, 228 and E100. This existing structure (E100) was previously part of a reconstruction of the Krause and Klepfer drain in the Northpoint, Sec. 2 subdivision per my report to the Board dated February 26, 2001 and approved by the Board on February 26, 2001 as noted in Minutes book 5, Page 565-566.

This line will consist of the following:

332' of 27" RCP
357' of 30" RCP
466' of Open Drain (Lake #1)
546' of 24" RCP

The total length of the new drain shall be 1701 feet. The 1050 feet of original drain between Sta. 6+00 and 16+50 shall be vacated. This proposal will add 651 feet to the drain's total length.

The cost of the relocation is to be paid by Estridge Development Company, Inc. The developer has provided the performance bond as follows:

Name of Bonding Co.: Developers Surety and Indemnity Company
Bond #: 718942S
Bond Date: November 3, 2006
Bond Amount: \$221,365.00

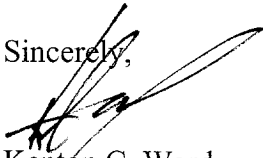
Attached is a Non-enforcement. The easement for the reconstructed drain will be per the secondary plat for Sunny Meadows, Sec. 1 as recorded in the Hamilton County Auditor's office. I recommend that the Board approve this Non-enforcement request.

The detention ponds (Lake # 1) located in Common Area 6 is to be considered part of the regulated drain. Pond maintenance shall include inlet, outlet, sediment removal and erosion control along the banks as part of the regulated drain. The maintenance of the ponds such as mowing and aquatic vegetation control will be the responsibility of the Homeowners Association. The Board will also retain jurisdiction for ensuring the storage volume for which the ponds were designed will be retained, thereby, allowing no fill or easement encroachments.

I recommend that this drain be classified as an urban drain.

The project falls under the requirements as set out in IC 36-9-27-52.5. Therefore, a hearing is not required for the petition. I recommend that the Board approve this petition.

Sincerely,



Kenton C. Ward
Hamilton County Surveyor

KCW/stc

HAMILTON COUNTY DRAINAGE BOARD
NOBLESVILLE, INDIANA

IN RE: Sunny Meadows, Sec. 1)
Hamilton County, Indiana)


PETITION FOR RELOCATION AND RECONSTRUCTION

Estridge Development Company, Inc. (hereinafter "Petitioner"),

hereby petitions the Hamilton County Drainage Board for authority to relocate and improve a section of the Krause & Klepfer Drain, and in support of said petition advises the Board that:

1. Petitioner owns real estate through which a portion of the Krause & Klepfer Drain runs.
2. Petitioner plans to develop its real estate with roads, buildings, utilities, storm drains, sanitary sewers and other structures.
3. Petitioner's proposed development of its real estate will require relocation and reconstruction of a portion of the Krause & Klepfer Drain, as specifically shown on engineering plans and specifications filed with the Hamilton County Surveyor.
4. The work necessary for the proposed relocation and reconstruction will be undertaken at the sole expense of the Petitioner and such work will result in substantial improvement to the Krause & Klepfer Drain, without cost to other property owners on the watershed of the Krause & Klepfer Drain.
5. Proposed relocation and reconstruction will not adversely affect other land owners within the drainage shed.
6. Petitioner requests approval of the proposed relocation and reconstruction under IC 36-9-27-52.5.

WHEREFORE, Petitioner requests that an Order issued from the Hamilton County Drainage Board authorizing relocation and reconstruction of the Krause & Klepfer Drain, in conformance with applicable law and plans and specifications on file with the Hamilton County Surveyor.


Signed _____
Bryan Stumpf, Estridge Development Co., Inc.
Printed _____

CERTIFICATE OF COMPLETION AND COMPLIANCE

To: Hamilton County Surveyor

Re: Krause and Klepfer Drain Reconstruction as part of the
Anderson Hall Subdivision, Fishers, Indiana

I hereby certify that:

1. I am a Registered Land Surveyor or Engineer in the State of Indiana.
2. I am familiar with the plans and specifications for the above referenced subdivision.
3. I have personally observed and supervised the completion of the drainage facilities for the above referenced subdivision.
4. The drainage facilities within the above referenced subdivision to the best of my knowledge, information and belief have been installed and completed in conformity with all plans and specifications.
5. The drainage facilities within the above referenced subdivision to the best of my knowledge, information and belief have been correctly represented on the Record Drawings, Digital Record Drawings and the Structure Data Spreadsheet.

Signature: _____ Date: Sept. 17, 2009

Type or Print Name: Duane A. Sharrer, P.E.

Business Address: The Schneider Corporation

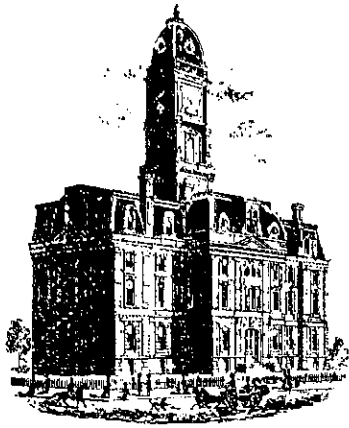
8901 Otis Avenue, Indianapolis, IN 46216

Telephone Number: 317-826-7302

SEAL

INDIANA REGISTRATION NUMBER

890258



SURVEYOR'S OFFICE Hamilton County

Kenton C. Ward, CFM
Surveyor of Hamilton County
Phone (317) 776-8495
Fax (317) 776-9628

Suite 188
One Hamilton County Square
Noblesville, Indiana 46060-2230

To: Hamilton County Drainage Board

February 19, 2010

Re: Krause & Klepfer: Anderson Hall Section 2 Relocation

Attached are as-builts, certificate of completion & compliance, and other information for Anderson Hall Section 2 Relocation. An inspection of the drainage facilities for this section has been made and the facilities were found to be complete and acceptable.

During construction, changes were made to the drain, which will alter the plans submitted with my report for this drain-dated November 3, 2006. The report was approved by the Board at the hearing held. (See Drainage Board Minutes Book 10, Pages 16-17)
The changes are as follows:

Structure:	Length:	Size	Material:	Up Invert:	Dn Invert	Grade:	Changes:
118-117	26	27	RCP	821.79	821.62	0.65	-5
117-116	88	27	RCP	821.55	821.39	8	
116-115	88	27	RCP	821.55	821.39	0.18	
115-114	123	27	RCP	821.39	821.14	0.2	-2
114-113	30	30	RCP	821.14	821.1	0.13	
113-112	74	30	RCP	821.1	821.01	0.12	
112-111	125	30	RCP	821.01	820.79	0.18	1
111-110	124	30	RCP	820.79	820.7	0.07	4
234-233	187	24	RCP	820.68	820.42	0.14	1
233-232	30	24	RCP	820.42	820.07	1.17	
232-231	45	24	RCP	820.07	820.03	0.09	1
231-230	106	24	RCP	820.03	819.89	0.13	1
230-229	97	24	RCP	819.89	819.64	0.26	-1
229-228	41	24	RCP	819.64	819.6	0.1	
228-100	42	24	RCP	819.6	819.53	0.17	

RCP Pipe Totals:

24	548
27	325
30	353

Other Totals:	
Open ditch	466
Total:	<u>1692</u>

The length of the drain due to the changes described above is now **1692 feet**. The original Krause & Klepfer and drain was vacated between Sta. 6+31 to Sta. 16+50. Therefore, 673 feet was added to the watershed's overall length.

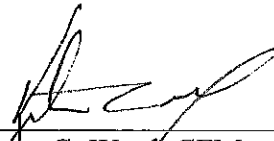
The non-enforcement was approved by the Board at its meeting on July 9, 2007 and recorded under instrument #2007038756.

The following sureties were guaranteed by Developers Surety and Indemnity Co and released by the Board on its October 12, 2009 meeting.

Bond-LC No: 718942S
Insured For: Storm Sewers
Amount: \$221,365
Issue Date: November 3, 2006

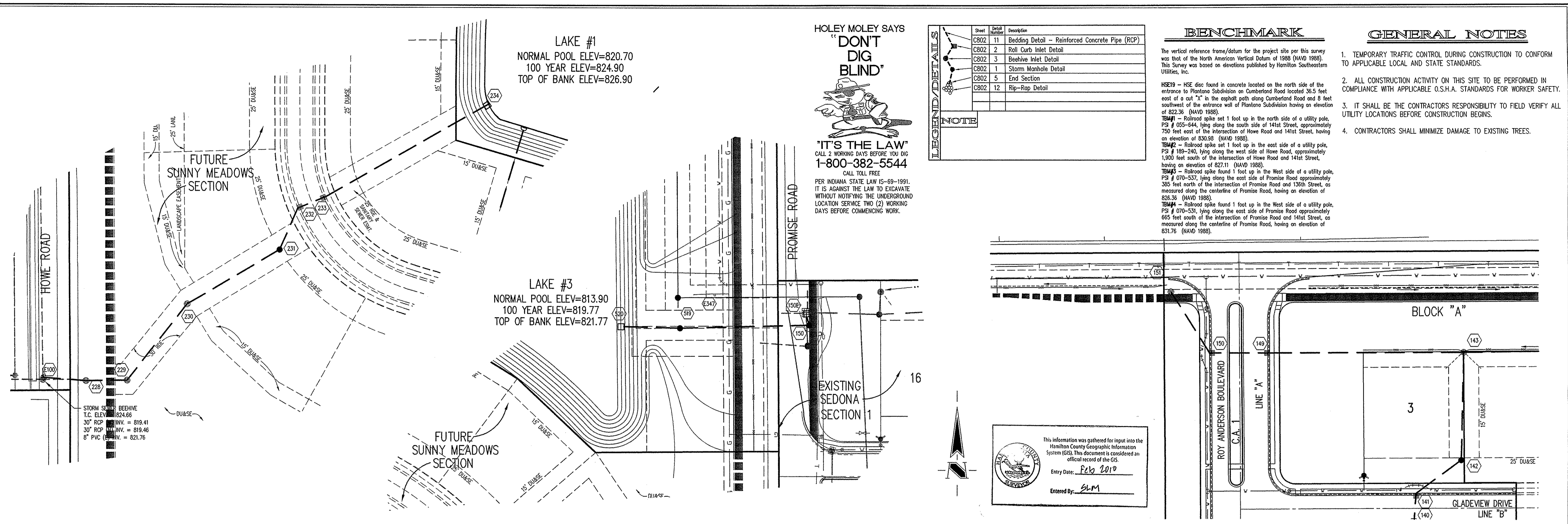
I recommend the Board approve the drain's construction as complete and acceptable.

Sincerely,



Kenton C. Ward, CFM
Hamilton County Surveyor

KCW/slm



REFERENCES:

- CGK 10/24/06 REVISION PER IAC COMMENTS.
- CGK 10/24/06 REVISION EXCESS SWIMS.
- CGK 10/24/06 REVISION PER IAC COMMENTS.
- CGK 10/24/06 REVISION PER IAC COMMENTS.
- CGK 10/24/06 REVISION PER IAC COMMENTS.
- CGK 10/24/06 REVISION PER IAC COMMENTS.
- CGK 10/24/06 REVISION PER IAC COMMENTS.
- CGK 10/24/06 REVISION PER IAC COMMENTS.

DATE: 03/26/07

THIS DRAWING AND THE IDEAS, DESIGNS AND CONCEPTS CONTAINED HEREIN ARE THE EXCLUSIVE INTELLECTUAL PROPERTY OF THE SCHNEIDER CORPORATION AND ARE NOT TO BE REPRODUCED, COPIED, OR IN ANY MANNER, WITHOUT THE WRITTEN CONSENT OF THE SCHNEIDER CORPORATION.

© COPYRIGHTED BY THE SCHNEIDER CORP. (2006)

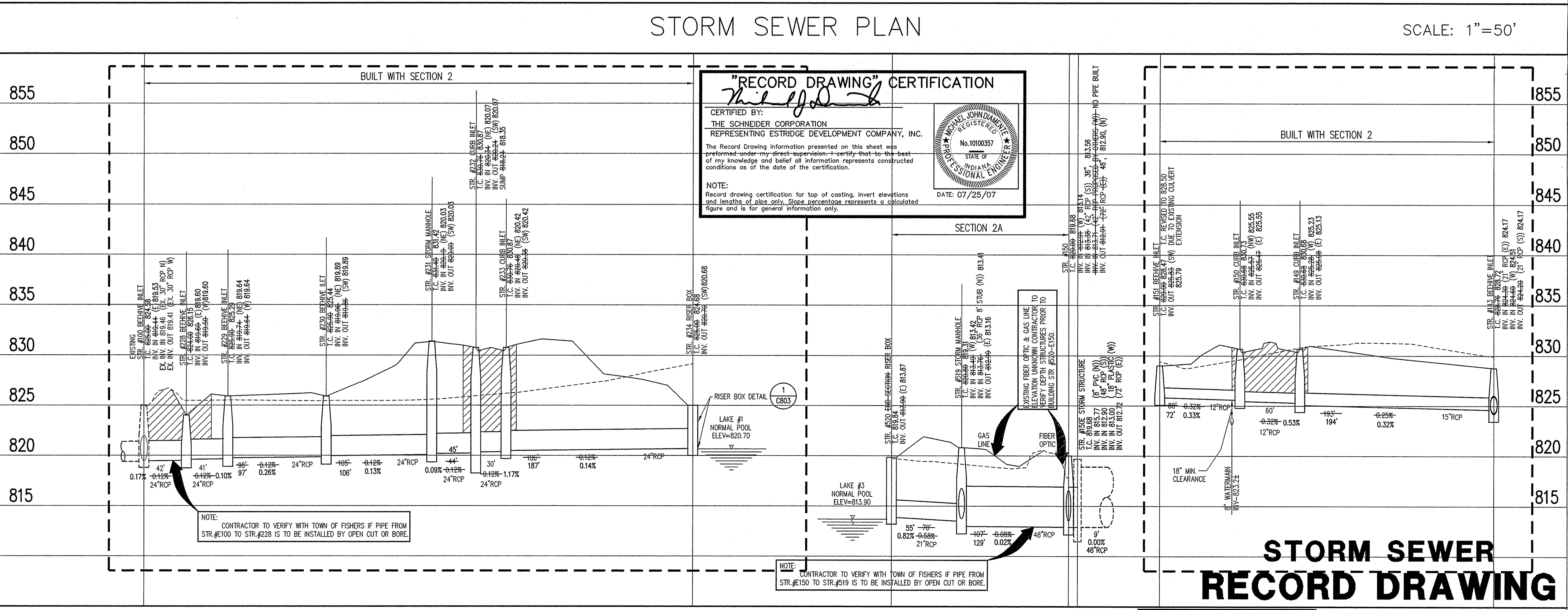
Schneider

THE SCHNEIDER CORPORATION
Historic Fort Harrison
8901 Ochs Avenue
Indianapolis, IN 46216-1037
Telephone: 317.826.7100
Fax: 317.826.7300
www.schneidercorp.com

Architecture
Civil Engineering
Environmental Engineering
Geotechnical Services
GIS * LIS
Home Builder Services
Interior Design
Land Surveying
Landscape Architecture
Transportation Engineering

ANDERSON HALL
SECTIONS 1 & 2
FISHERS, INDIANA

ESTRIDGE DEVELOPMENT COMPANY, INC.
CARMEL, INDIANA



NOTE: CONTRACTOR TO VERIFY WITH TOWN OF FISHERS IF PIPE FROM STR.#E100 TO STR.#E228 IS TO BE INSTALLED BY OPEN CUT OR BORE.

NOTE: CONTRACTOR TO VERIFY WITH TOWN OF FISHERS IF PIPE FROM STR.#E150 TO STR.#E159 IS TO BE INSTALLED BY OPEN CUT OR BORE.

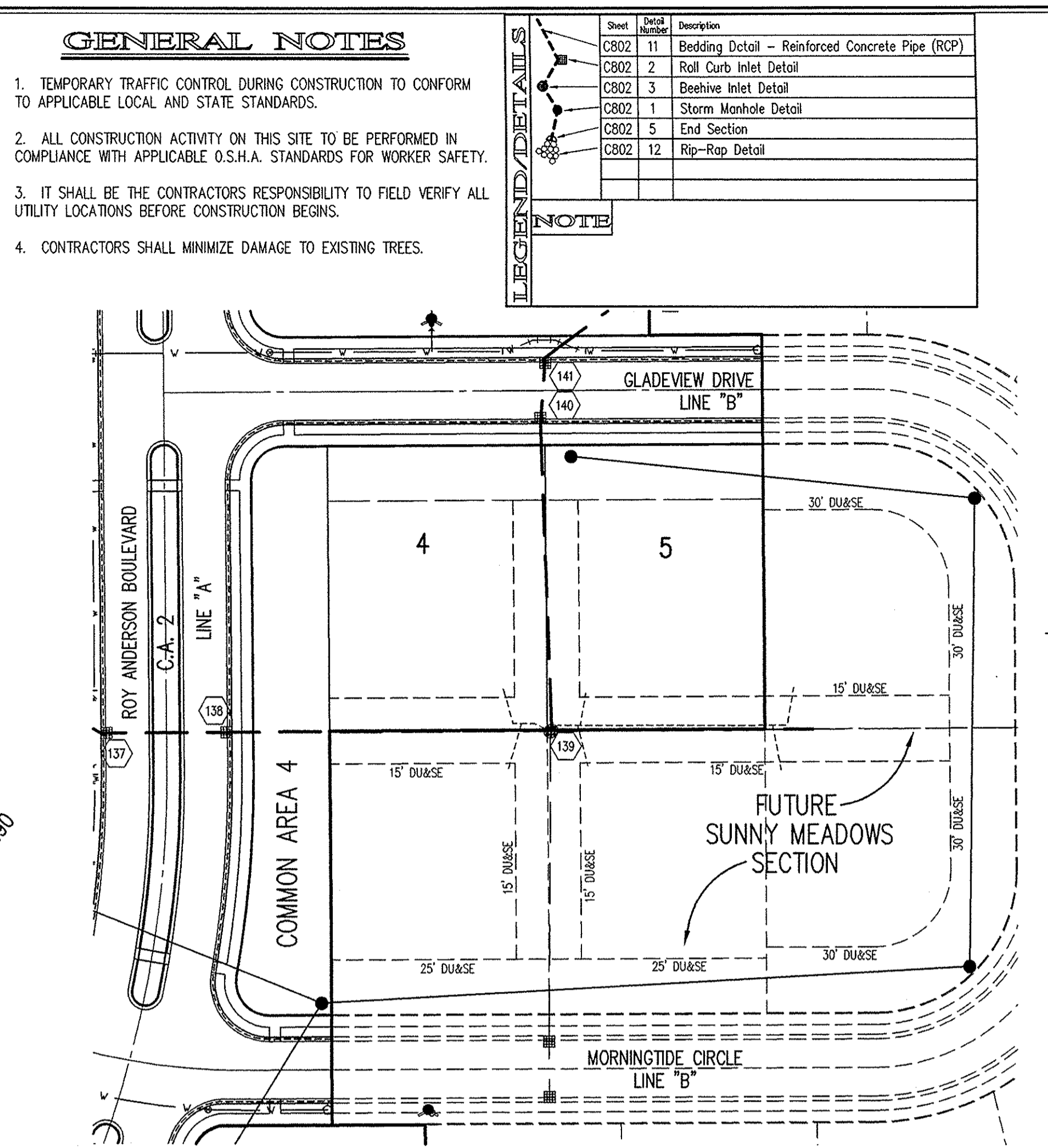
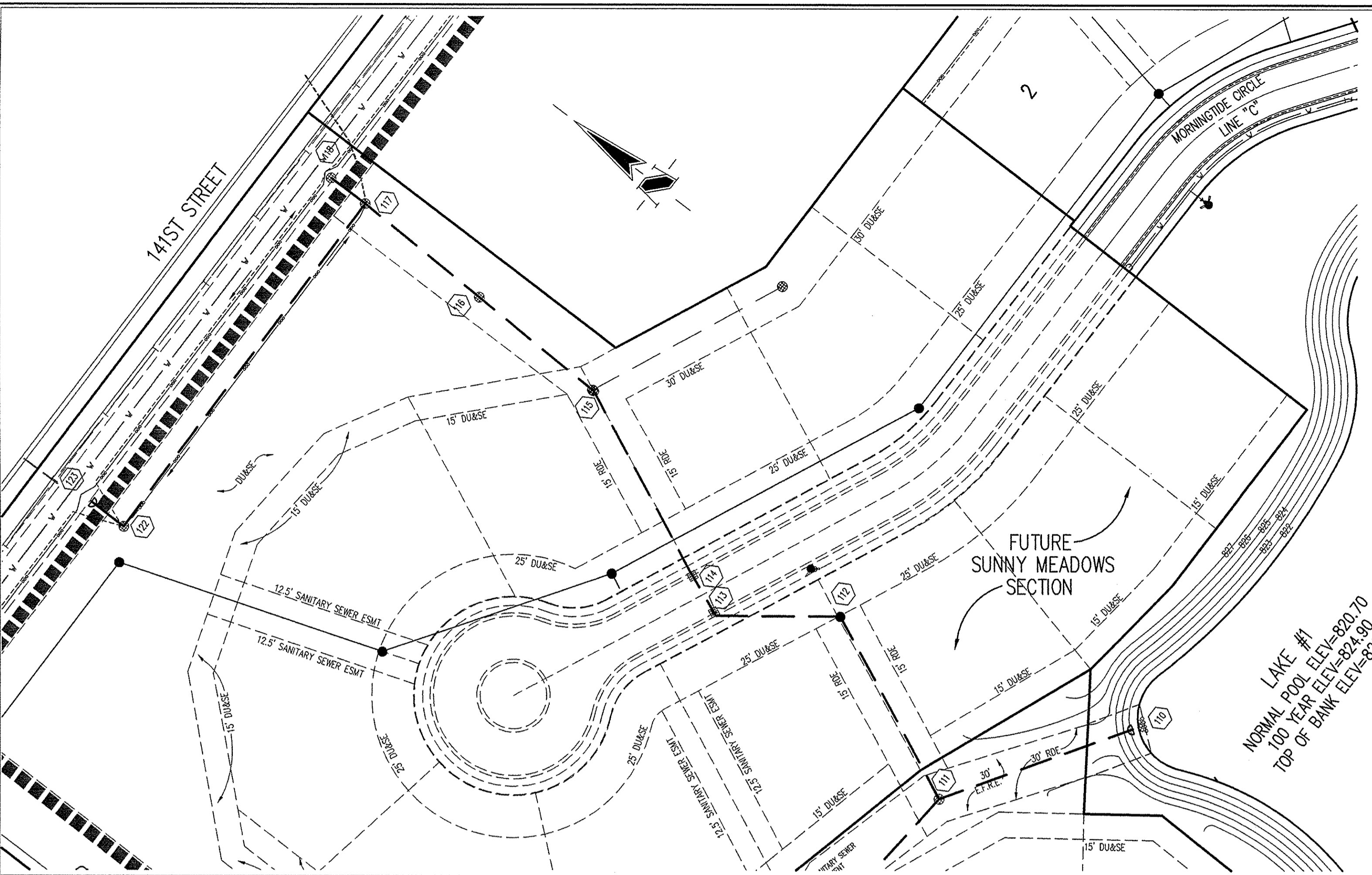
DATE: 08/31/06 **PROJECT NO.:** 4788.002

DRAWN BY: DRP **CHECKED BY:** JLF

SHEET TITLE: STORM SEWER PLAN

DRAWING FILES:
R:\4\4788\002\DWG\S\601
XREF: 4\4788\002\DWG\S\376M
XREF: 4\4788\002\DWG\S\4788002S
XREF: 4\4788\003\DWG\S\4788003S
XREF: 4\4788\001\DWG\S\4788001T

SHEET NO.: C604



- GENERAL NOTES**
1. TEMPORARY TRAFFIC CONTROL DURING CONSTRUCTION TO CONFORM TO APPLICABLE LOCAL AND STATE STANDARDS.
 2. ALL CONSTRUCTION ACTIVITY ON THIS SITE TO BE PERFORMED IN COMPLIANCE WITH APPLICABLE O.S.H.A. STANDARDS FOR WORKER SAFETY.
 3. IT SHALL BE THE CONTRACTORS RESPONSIBILITY TO FIELD VERIFY ALL UTILITY LOCATIONS BEFORE CONSTRUCTION BEGINS.
 4. CONTRACTORS SHALL MINIMIZE DAMAGE TO EXISTING TREES.

LEGEND/DETAILS

Sheet	Detail	Description
C602	11	Bedding Detail - Reinforced Concrete Pipe (RCP)
C602	2	Roll Curb Inlet Detail
C602	3	Beehive Inlet Detail
C602	1	Storm Manhole Detail
C602	5	End Section
C602	12	Rip-Rap Detail

HOLEY MOLEY SAYS
"DON'T DIG BLIND"
IT'S THE LAW!
CALL 2 WORKING DAYS BEFORE YOU DIG
1-800-382-5544
CALL TOLL FREE
PER INDIANA STATE LAW IS-66-1991
IT IS AGAINST THE LAW TO EXCAVATE
WITHOUT NOTIFYING THE UNDERGROUND
LOCATION SERVICE TWO (2) WORKING
DAYS BEFORE COMMENCING WORK.

BENCHMARK
The vertical reference frame/datum for the project site per this survey was that of the North American Vertical Datum of 1988 (NAVD 1988). This Survey was based on elevations published by Hamilton Southeastern Utilities, Inc.

HSE19 - HSE disc found in concrete located on the north side of the entrance to Plantonsa Subdivision on Cumberland Road located 36.5 feet east of a cut "X" in the asphalt path along Cumberland Road and 8 feet southwest of the entrance wall of Plantonsa Subdivision having an elevation of 822.36 (NAVD 1988).
TBM#1 - Railroad spike set 1 foot up in the north side of a utility pole, PS # 055-644, lying along the south side of Howe Road, approximately 750 feet east of the intersection of Howe Road and 141st Street, having an elevation of 830.99 (NAVD 1988).
TBM#2 - Railroad spike set 1 foot up in the east side of a utility pole, PS # 189-240, lying along the west side of Howe Road, approximately 1,300 feet south of the intersection of Howe Road and 141st Street, having an elevation of 827.11 (NAVD 1988).
TBM#3 - Railroad spike found 1 foot up in the West side of a utility pole, PS # 070-537, lying along the east side of Promise Road approximately 355 feet north of the intersection of Promise Road and 150th Street, as measured along the centerline of Promise Road, having an elevation of 826.36 (NAVD 1988).
TBM#4 - Railroad spike found 1 foot up in the West side of a utility pole, PS # 070-531, lying along the east side of Promise Road approximately 665 feet south of the intersection of Promise Road and 141st Street, as measured along the centerline of Promise Road, having an elevation of 831.76 (NAVD 1988).

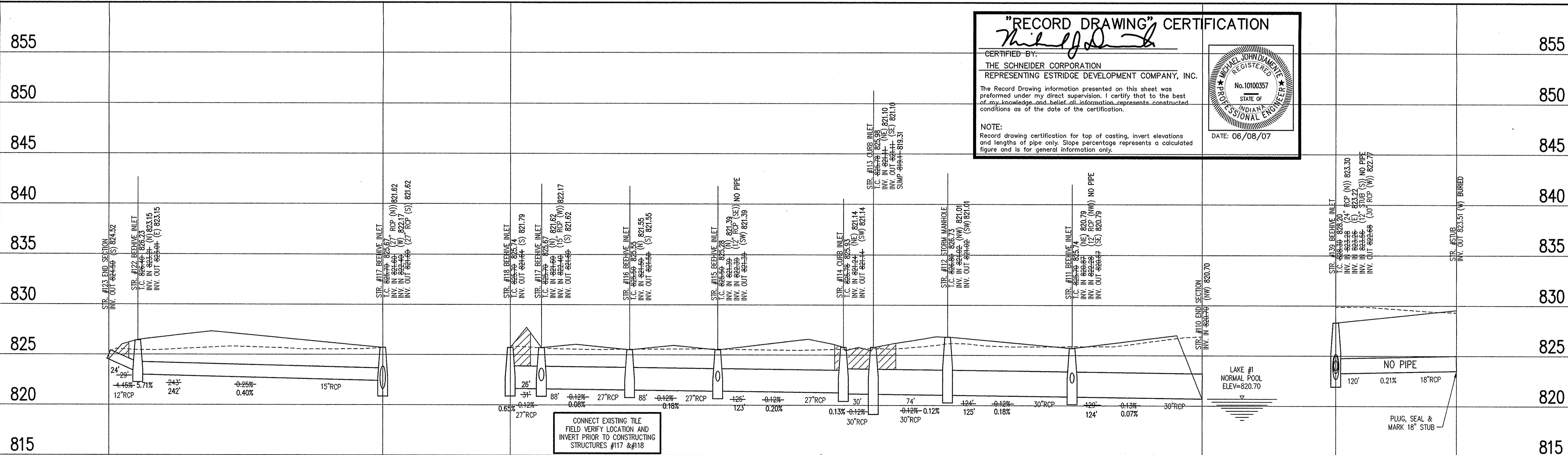
REVISIONS:
1. COK 10/24/06 REVISION PROCESS SHIMS
2. COK 10/24/06 REVISION STORM RIM STRUCTURES 118-110
3. COK 10/24/06 REVISION PER IAC COMMENTS
4. COK 10/25/06 REVISION PER IAC COMMENTS

DATE: 10/27/06
THIS DRAWING AND THE IDEAS, DESIGNS AND CONCEPTS CONTAINED HEREIN ARE THE INTELLECTUAL PROPERTY OF THE SCHNEIDER CORPORATION, AND ARE NOT TO BE USED OR REPRODUCED, IN WHOLE OR IN PART, WITHOUT THE WRITTEN CONSENT OF THE SCHNEIDER CORPORATION.
© COPYRIGHTED BY THE SCHNEIDER CORP. (2006)

Schneider
THE SCHNEIDER CORPORATION
Historic Fort Harrison
8901 Otis Avenue
Indianapolis, IN 46216-1037
Telephone: 317.826.7100
Fax: 317.826.7300
www.schneidercorp.com
Architecture
Civil Engineering
Environmental Engineering
Geotechnical Services
GIS * LIS
Home Builder Services
Interior Design
Land Surveying
Landscape Architecture
Transportation Engineering

STORM SEWER PLAN

SCALE: 1"=50'



"RECORD DRAWING" CERTIFICATION
Certified By: *Michael J. Johnson*
THE SCHNEIDER CORPORATION
REPRESENTING ESTRIDGE DEVELOPMENT COMPANY, INC.
The Record Drawing information presented on this sheet was prepared under my direct supervision. I certify that to the best of my knowledge and belief, the information represents constructed conditions as of the date of the certification.
NOTE:
Record drawing certification for top of casting, invert elevations and lengths of pipe only. Slope percentage represents a calculated figure and is for general information only.
DATE: 06/08/07

This information was gathered for input into the Hamilton County Geographic Information System (GIS). This document is considered an official record of the GIS.
Entry Date: Feb 2010
Entered By: SLM

STORM SEWER RECORD DRAWING

LEGEND

	Existing Grade
	New Grade
	Granular Backfill

SCALE: HORZ.: 1"=50'
VERT.: 1"=5'

STORM SEWER PROFILE

ANDERSON HALL
SECTIONS 1 & 2
FISHERS, INDIANA
ESTRIDGE DEVELOPMENT COMPANY, INC.
CARMEL, INDIANA

DATE: 08/31/06	PROJECT NO.: 4788.002
DRAWN BY: DRP	CHECKED BY: JLF
SHEET TITLE: STORM SEWER PLAN	
DRAWING FILES: R:\4\4788\002\DWGS\C601 XREF: 4\4788\002\DWGS\STORM XREF: 4\4788\002\DWGS\4788002B5 XREF: 4\4788\003\DWGS\4788003B5 XREF: 4\4788\001\DWGS\4788001T	
SHEET NO.: C603	